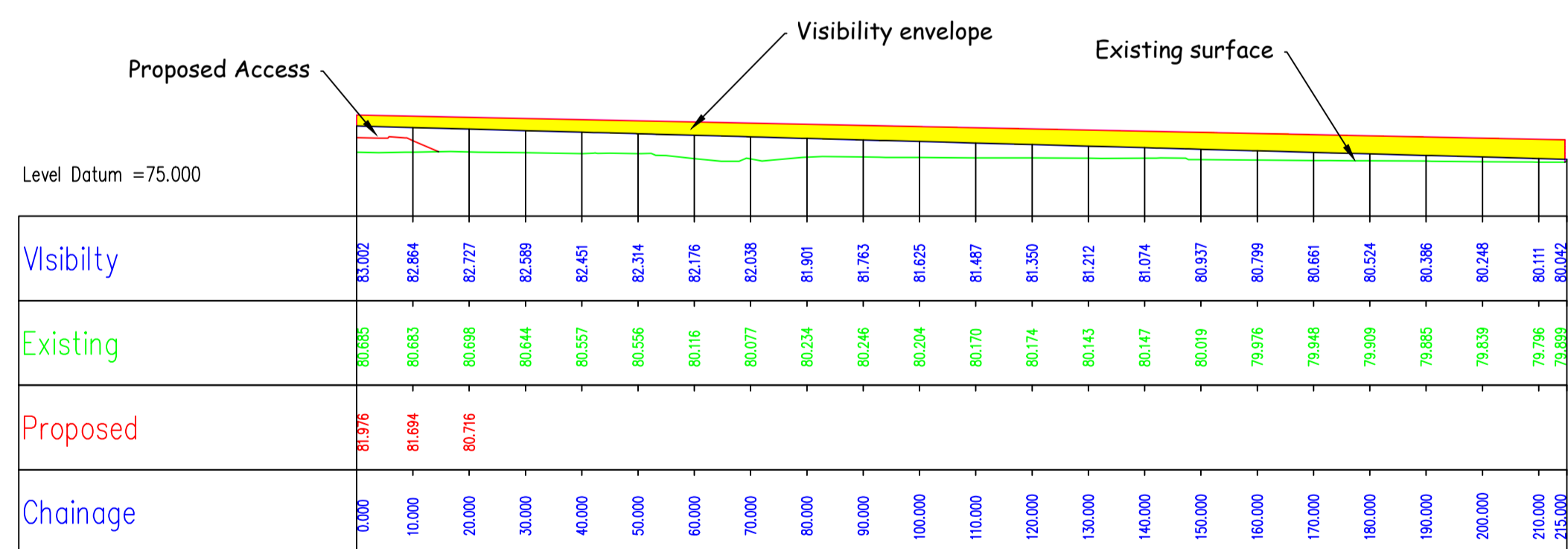
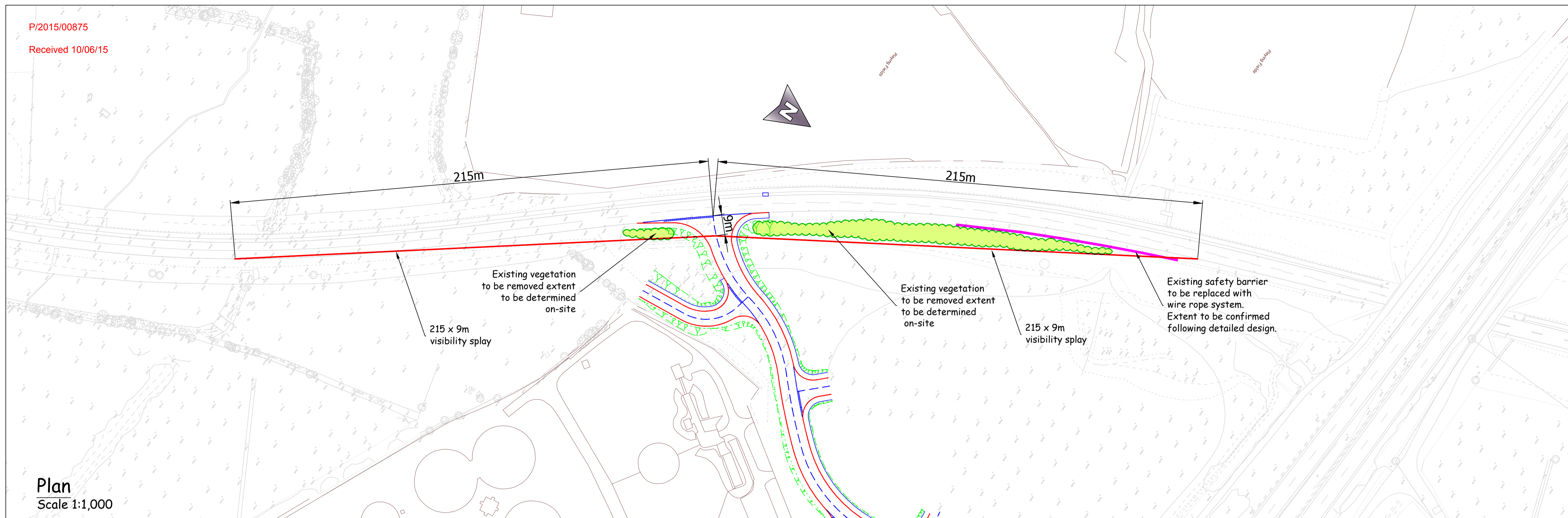
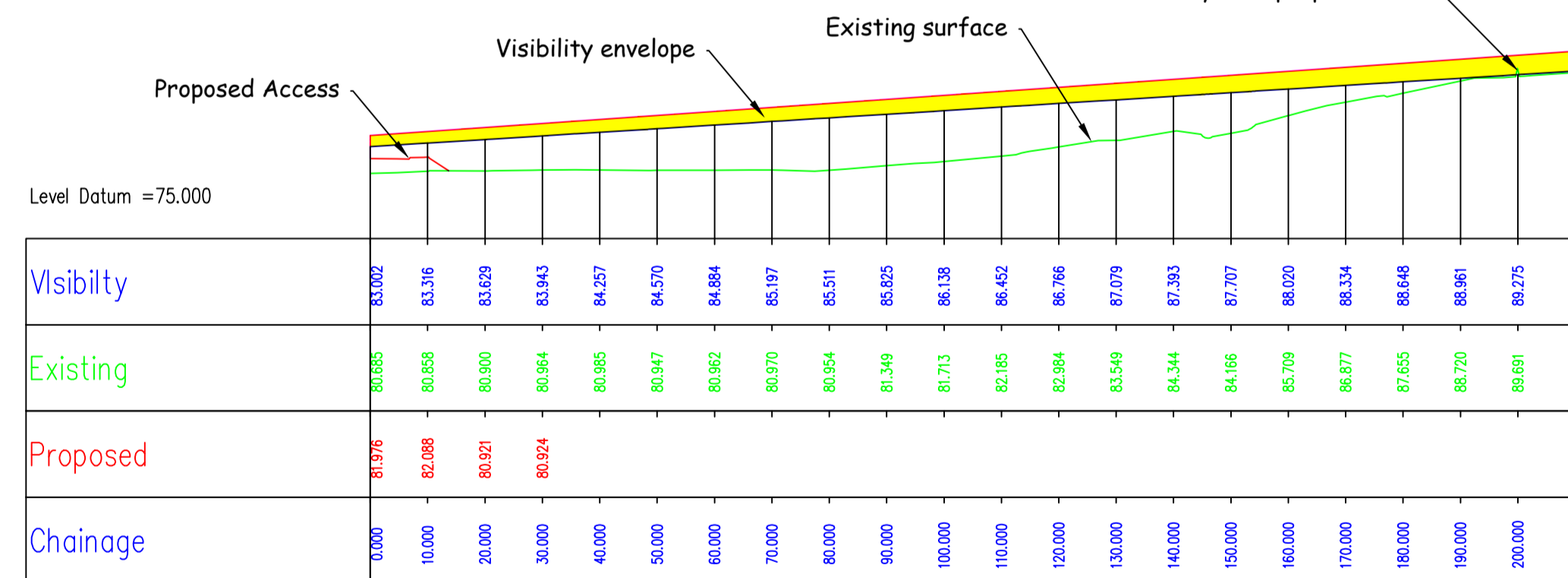


P/2015/00875
 Received 10/06/15

A1



Visibility Section - Looking South
 Scale 1:1,00H - 1:500V



Visibility Section - Looking North
 Scale 1:1,00H - 1:500V

Rev	Date	Detail	By
-----	------	--------	----

Revisions



The Built County - Highways
 1 Staffordshire Place
 C/O Wedgwood Building,
 Tipping Street
 Stafford, ST16 2DH

A518 The Dove Way,
 Uttoxeter - HWRC

Access Highway Works
 Visibility Details

Prepared	Produced	Checked	Scale
MF	MF	SK	As Shown

Grid Reference
 409 350, 334 500

Date	Size
June 2015	A1

Drawing No.
 CDW8936/R00/10

Status
 Approved

Trim to this line for A1

J:\Highways\Major Projects\Powerhouse Central\Powerhouse Central\A518\HWRC\CDW8936\CDW8936\A1-500.dwg
 File Name: J:\Highways\Major Projects\Powerhouse Central\Powerhouse Central\A518\HWRC\CDW8936\CDW8936\A1-500.dwg
 Layout Name: A1-500